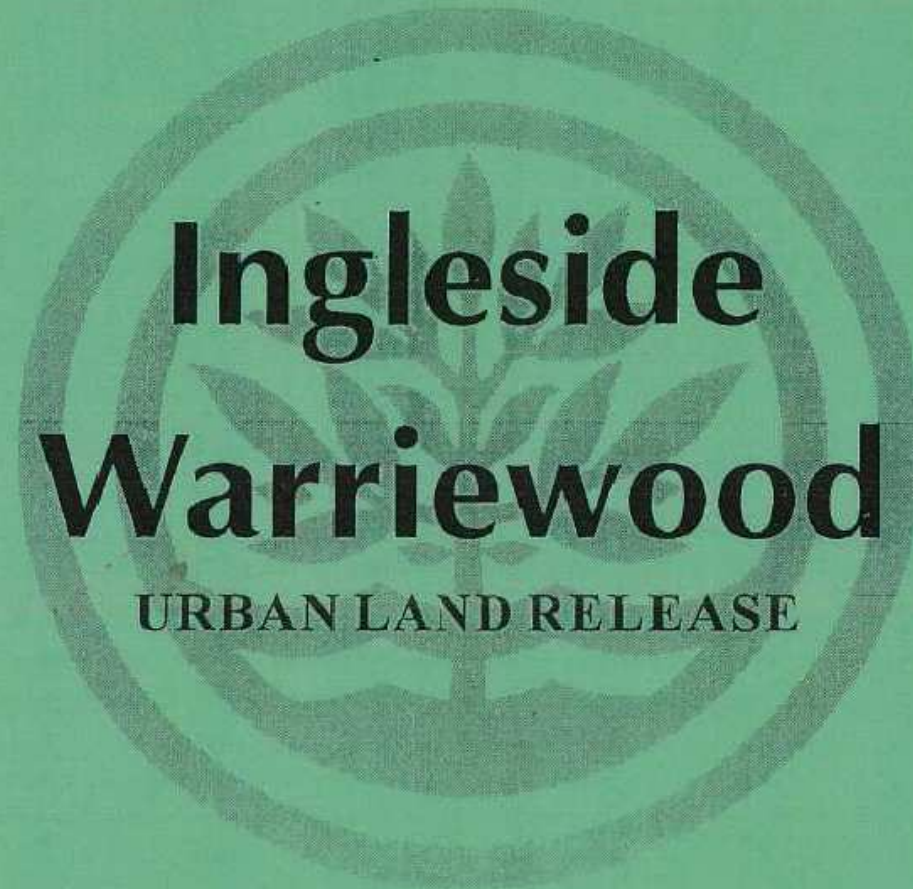


Pittwater Council










**Ingleside
Warriewood**
URBAN LAND RELEASE

**DRAFT
PLANNING STRATEGY 1995**

INGLESIDE / WARRIEWOOD LAND CAPABILITY

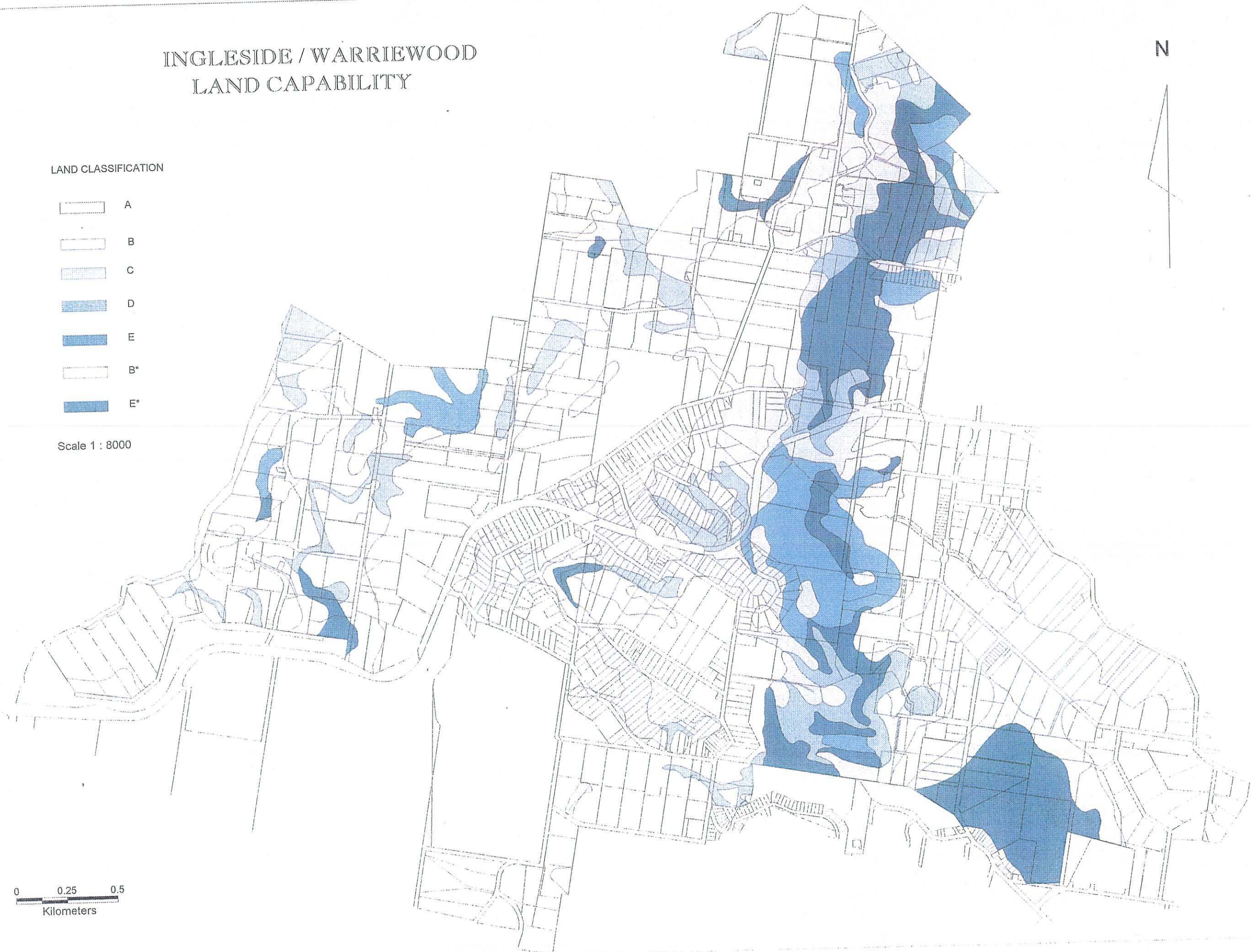
N

LAND CLASSIFICATION

-  A
-  B
-  C
-  D
-  E
-  B*
-  E*

Scale 1 : 8000

0 0.25 0.5
Kilometers

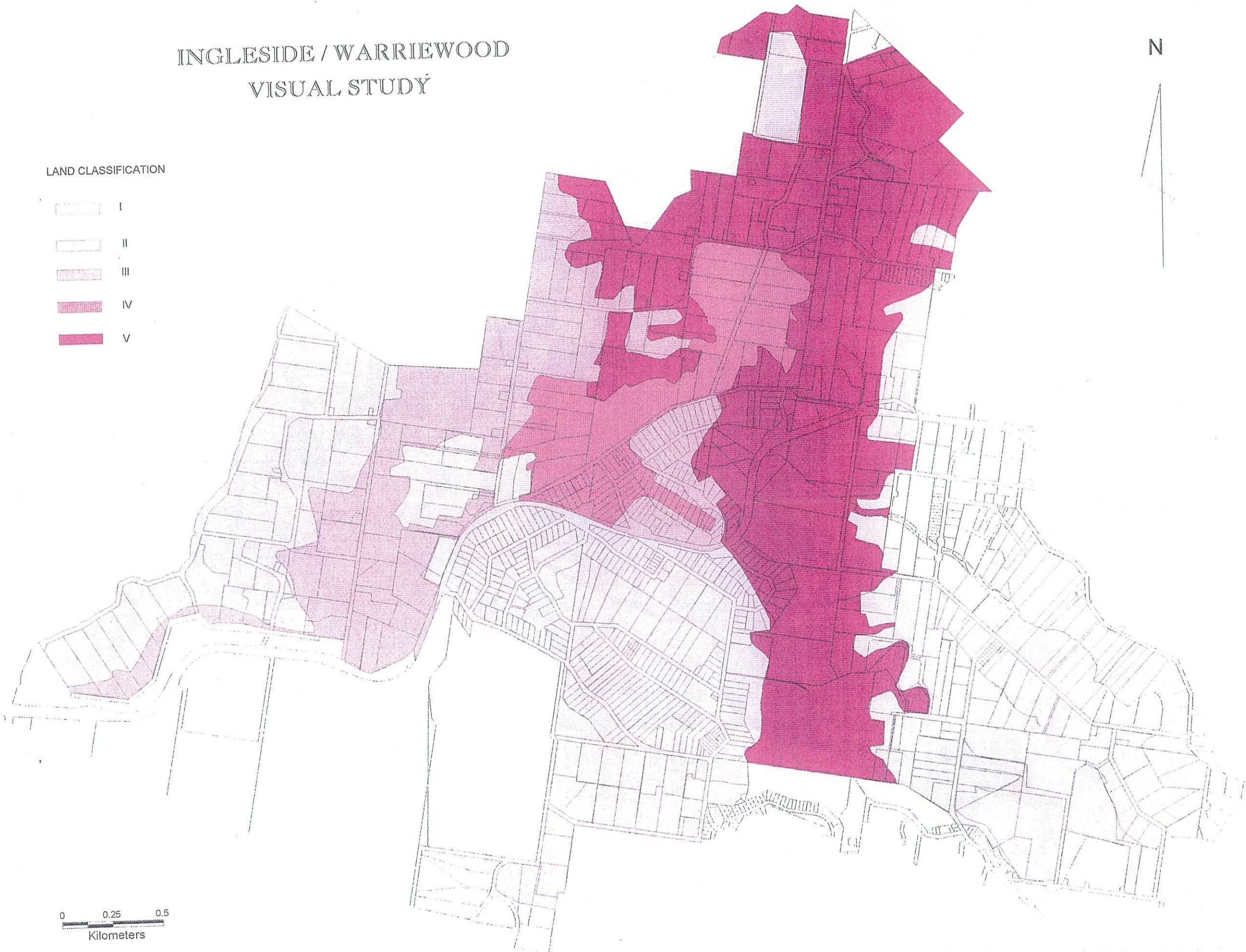


INGLESIDE / WARRIEWOOD VISUAL STUDY

LAND CLASSIFICATION

- I
- II
- III
- IV
- V





N

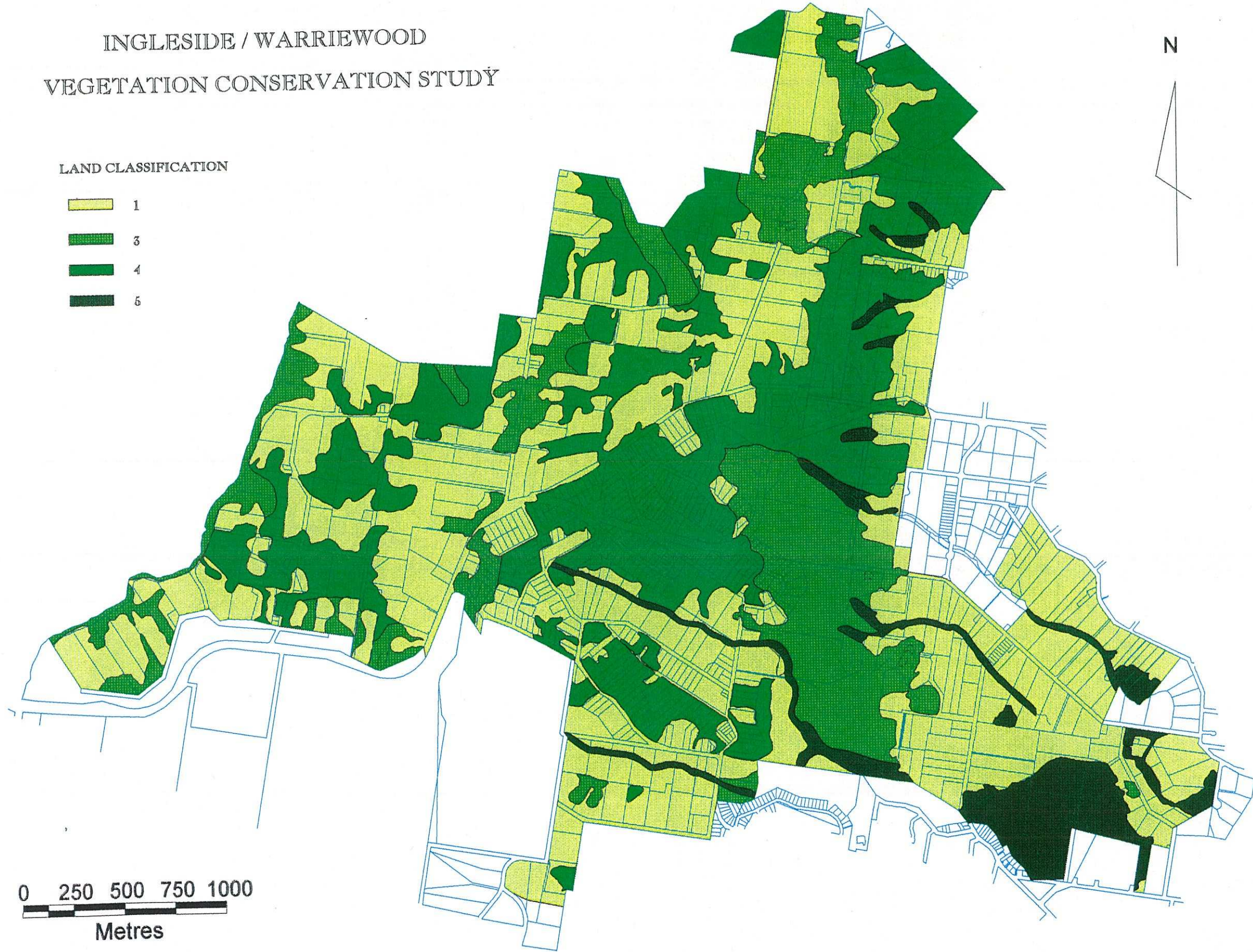


0 0.25 0.5
Kilometers

INGLESIDE / WARRIEWOOD
VEGETATION CONSERVATION STUDY

LAND CLASSIFICATION

-  1
-  3
-  4
-  5






0 250 500 750 1000

Metres

Scale 1 : 20,000

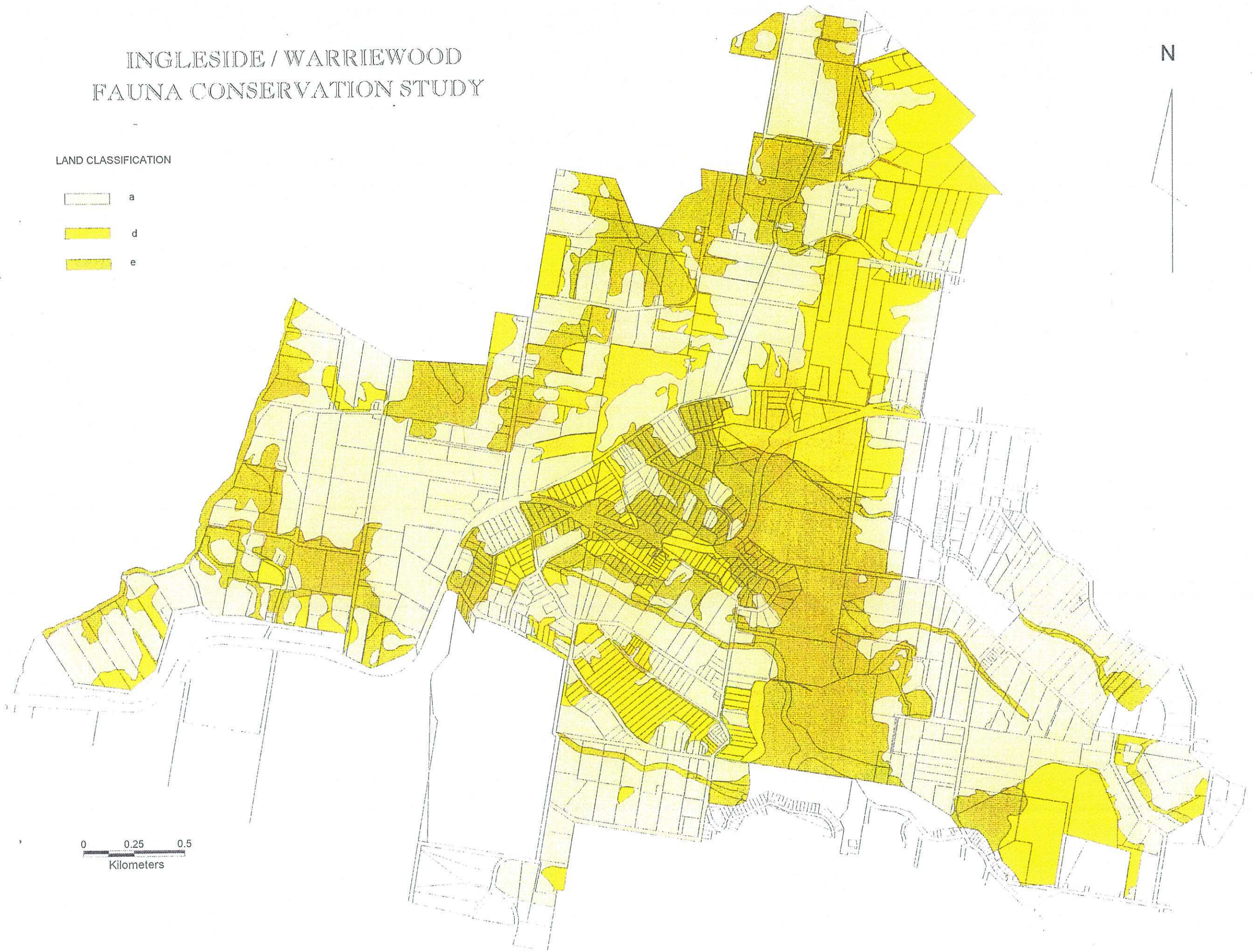
INGLESIDE / WARRIEWOOD FAUNA CONSERVATION STUDY

LAND CLASSIFICATION

-  a
-  d
-  e



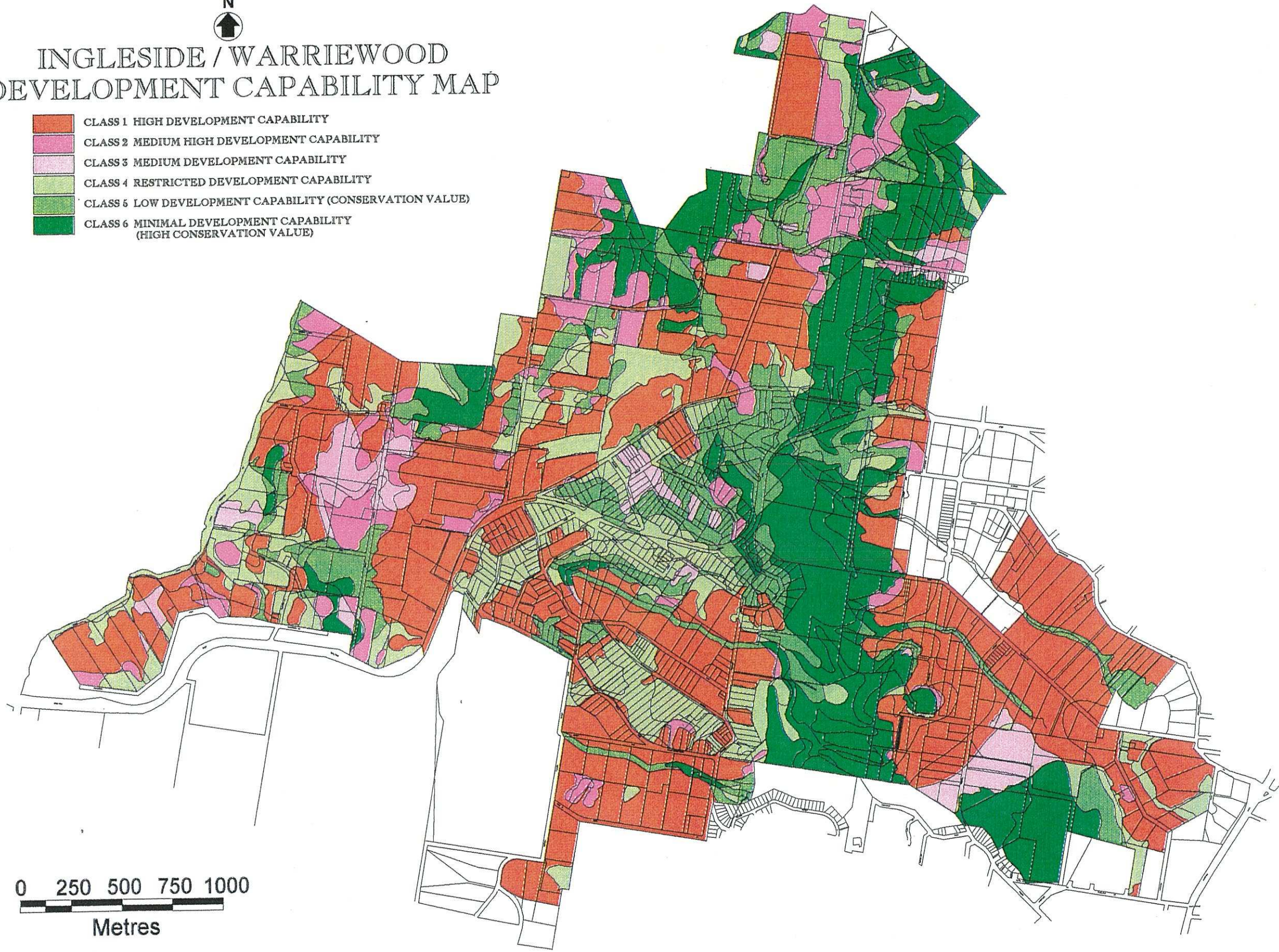
0 0.25 0.5
Kilometers



N
↑

INGLESIDE / WARRIEWOOD DEVELOPMENT CAPABILITY MAP

- CLASS 1 HIGH DEVELOPMENT CAPABILITY
- CLASS 2 MEDIUM HIGH DEVELOPMENT CAPABILITY
- CLASS 3 MEDIUM DEVELOPMENT CAPABILITY
- CLASS 4 RESTRICTED DEVELOPMENT CAPABILITY
- CLASS 5 LOW DEVELOPMENT CAPABILITY (CONSERVATION VALUE)
- CLASS 6 MINIMAL DEVELOPMENT CAPABILITY (HIGH CONSERVATION VALUE)



0 250 500 750 1000







Metres

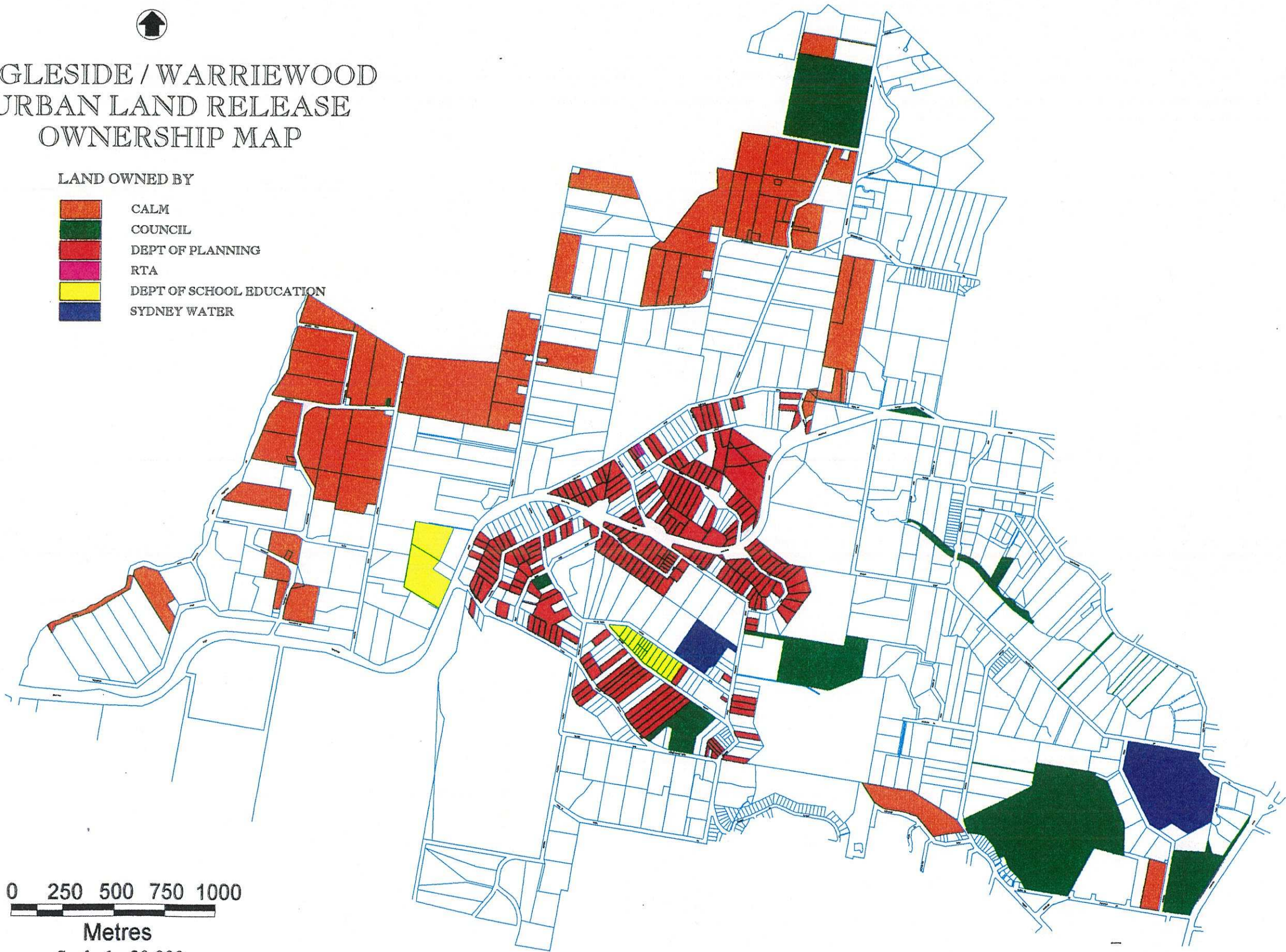
Scale 1 : 20,000



INGLESIDE / WARRIEWOOD URBAN LAND RELEASE OWNERSHIP MAP

LAND OWNED BY

-  CALM
-  COUNCIL
-  DEPT OF PLANNING
-  RTA
-  DEPT OF SCHOOL EDUCATION
-  SYDNEY WATER



0 250 500 750 1000

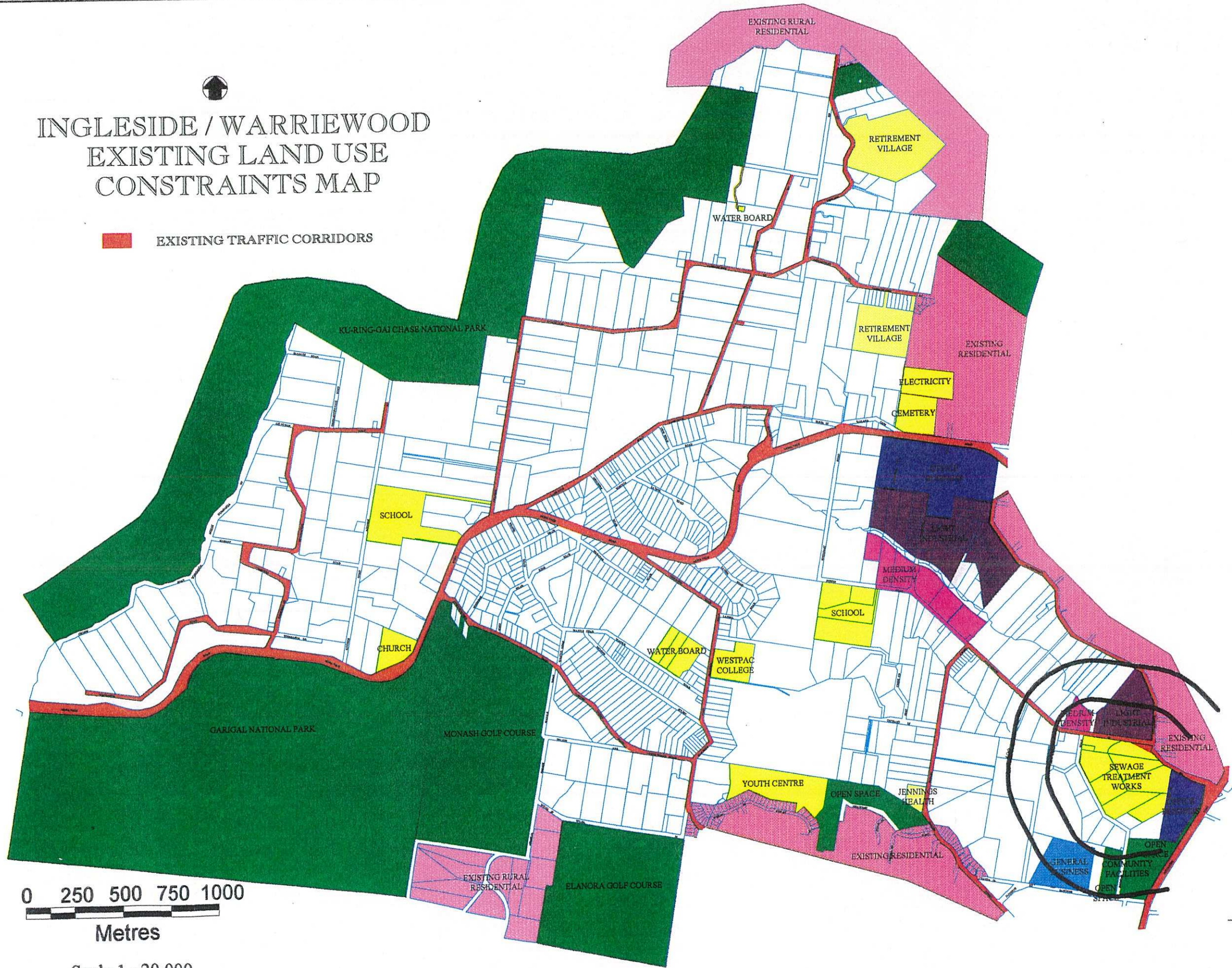


Metres

Scale 1 : 20,000

INGLESIDE / WARRIEWOOD
EXISTING LAND USE
CONSTRAINTS MAP

EXISTING TRAFFIC CORRIDORS



0 250 500 750 1000
Metres

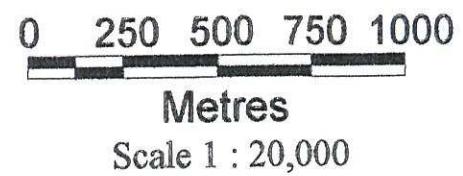
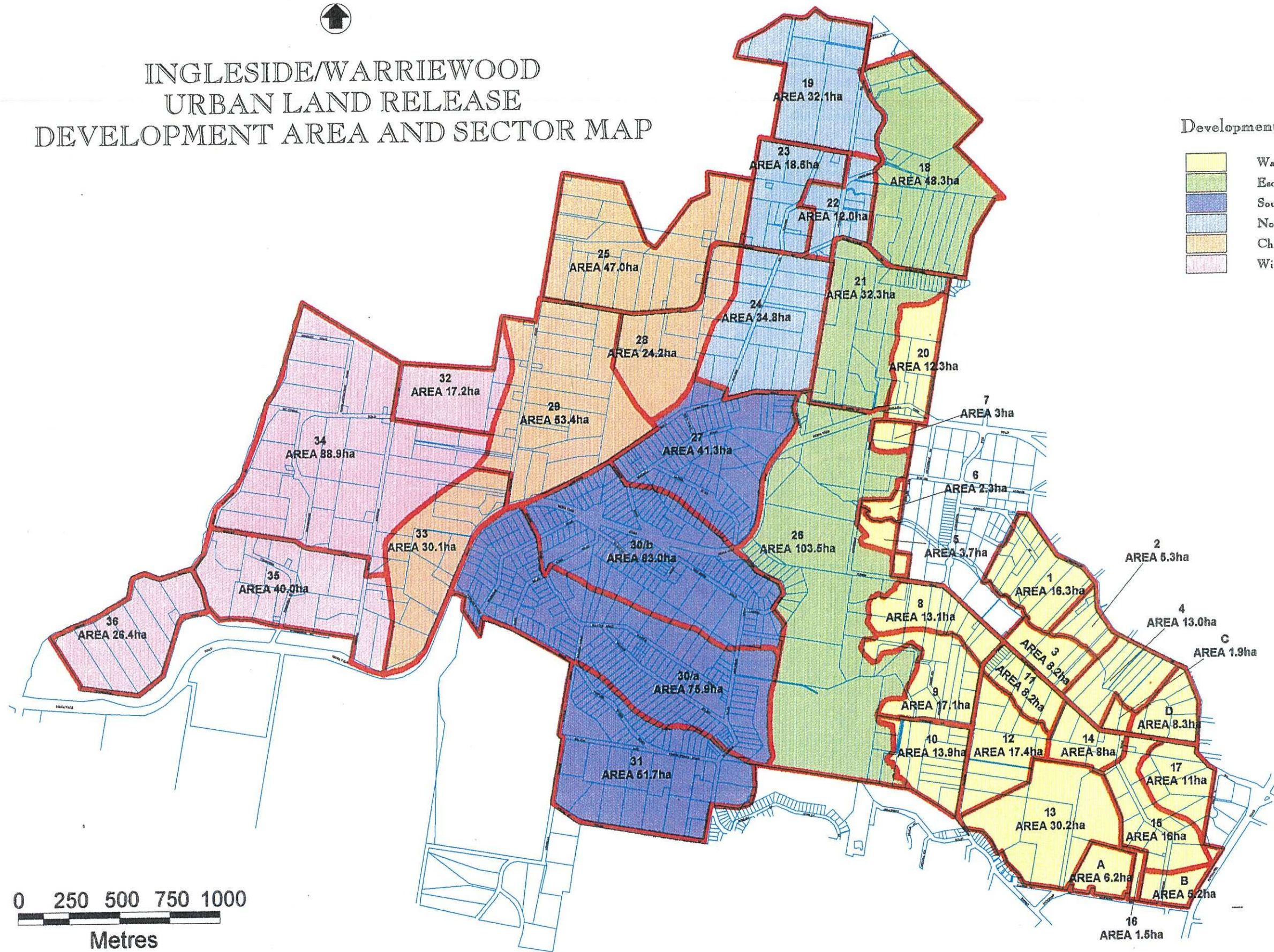
Scale 1 : 20,000



INGLESIDE/WARRIEWOOD URBAN LAND RELEASE DEVELOPMENT AREA AND SECTOR MAP

Development Areas

	Warriewood Valley
	Escarpment
	South Ingleside
	North Ingleside
	Chiltern Road
	Wirroanda



INGLESIDE / WARRIEWOOD URBAN LAND RELEASE DRAFT PLANNING STRATEGY



- CONSERVATION / OPEN SPACE
- CREEKLINE- RIDGELINE CORRIDOR/BUFFER
- PEDESTRIAN/CYCLE LINEAL LINK
- EXISTING TRAFFIC CORRIDOR
- EMPLOYMENT GENERATING LAND
- WARRIEWOOD STP
- MEDIUM DENSITY RESIDENTIAL
- MIXED RESIDENTIAL
- TRADITIONAL RESIDENTIAL
- RESTRICTED RESIDENTIAL
- UNDETERMINED STP BUFFER
- EXISTING INDUSTRIAL LAND SUBJECT TO CURRENT REZONING APPLICATION
- SUBJECT TO ENVIRONMENTAL CONSTRAINTS

Important Note

The Council now publishes the results and outcomes of a number of studies carried out its behalf as part of the Ingleside/Warriewood Urban Land Release Project.

This information and map is not a Planning Instrument.

It does not show, or purport to show, actual or likely future zonings or land uses under any future Planning Instrument to be made.

Council specifically advises that this information cannot be relied on as showing, or purporting to show:

- a) Actual zonings or land uses; or
- b) Likely or possible future zoning or land uses.

